

Our Mission:

- To protect the public health and environment.
- To provide for safe and cost-efficient collection of sewage waste.
- To provide for effective conveyance to the Treatment Plant.

We are pleased to present this Annual Report of the Cupertino Sanitary District (CuSD) recognizing 62 years of service to over 23,000 customers within the communities of Cupertino, portions of Saratoga, Sunnyvale, Los Altos and unincorporated areas within Santa Clara County.

CuSD covers approximately 15 square miles, serving a population of over 50,000 with more than 23,000 residential and business units. The District owns and manages over one million lineal feet of sewer mains, half a million lineal feet of sewer laterals, 17 pump stations, 4,000 manholes and flushing inlets, and one equipment storage facility. CuSD conveys nearly 5-million gallons of wastewater daily from our customers for treatment at the San Jose/Santa Clara Regional Wastewater Facility.

CuSD's collection system, much of which is more than 50 years old, has been maintained proactively with regular cleaning and development of a Capital Improvement Program (CIP) aimed at improving efficiency as well as extending its useful service life.

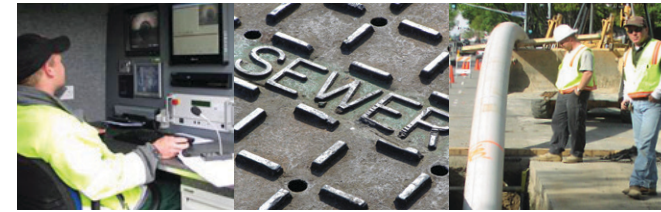
Board of Directors

John M. Gatto • William A. Bosworth • Angela S. Chen
Patrick S. Kwok • Taghi S. Saadati

District Staff

Richard K. Tanaka - District Manager-Engineer
Benjamin Porter - Deputy District Manager
Mark Thomas & Company, Inc.

Marc Hynes - District Counsel, *Atkinson-Farasyn, LLP*



2018 ANNUAL REPORT



**24 HOUR SEWER
EMERGENCY RESPONSE SERVICE
CALL US FIRST
(408) 253-7071**



20863 Stevens Creek Boulevard
Suite 100
Cupertino, CA 95014

Phone: 408.253.7071 Fax: 408.253.5173
www.cupertino sanitarydistrict.org



Flush Responsibly

Non-flushable items, including disposable wipes, have been observed in the sewer collection system and are often the cause of sewer backups or pump station failure.

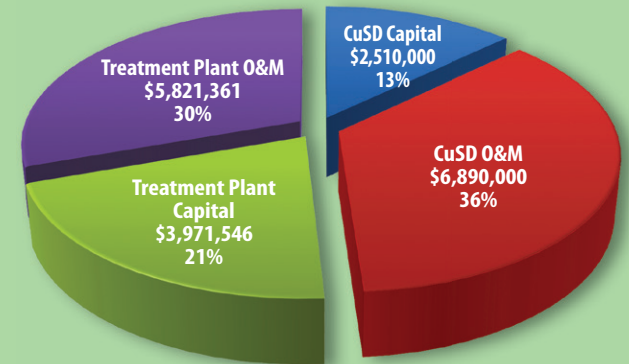
Baby and disposable wipes are proving to be an increasing problem. They do not break down in the sewer system and get caught up on roots in the line and in our pump stations. This causes sewer backups and interferes with proper operation of our pumps.

The toilet is not a trash can. The only thing you should be flushing is human waste and toilet paper. Disposable does not mean flushable.



Facts & Figures

Operating Budget for FY 2018-19:



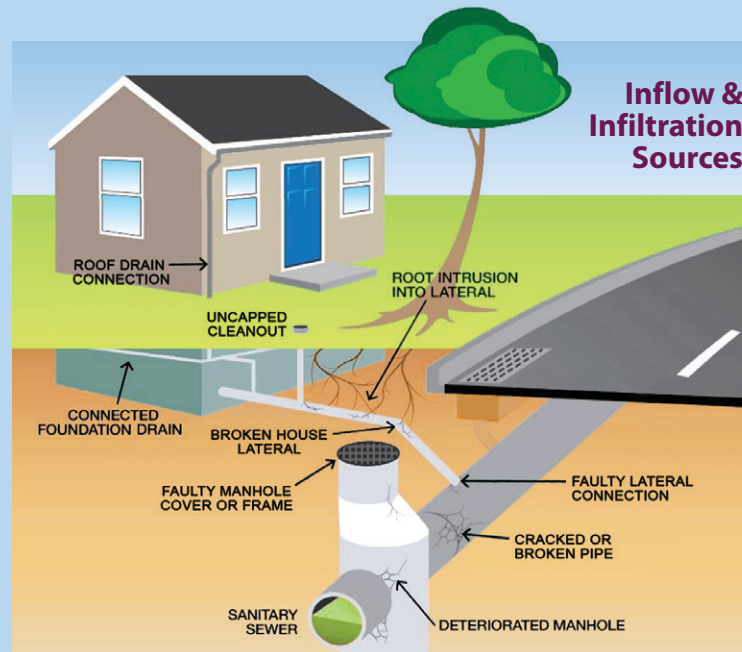
Smoke Testing to Identify Inflow and Infiltration

Inflow and Infiltration (I & I) is something the District will be placing a greater emphasis on as our infrastructure ages and we experience increased development. Inflow refers to illegal connections in the sanitary sewer system by storm water drainage facilities. Infiltration results when storm water flows into the sanitary sewer system through cracks in pipes. Both place a burden on the District's collection system during heavy rain events. During or after an especially intense rainfall, the District's sewer mainlines and pump stations could be overwhelmed by the I & I into the system when combined with the normal sanitary sewage.

The District is taking steps, as part of the 10-Year Capital Improvement Project Master Plan, to investigate and reduce I & I. This Fall we will initiate Smoke Testing in selected areas throughout the District to locate possible sources of I & I where rainwater can enter the sanitary sewer collection system.

This effort is just one of the ways to accomplish our mission:

- To protect the public health and environment.
- To provide for safe and cost-efficient collection of sewage waste.
- To provide for effective conveyance to the Treatment Plant.



Notable Accomplishments for FY 2017-18:

- Completed construction on the Calabazas Creek CIP project to upsize the sewer main to accommodate a new, large development.
- Completed 50 sewer mainline repairs and performed CCTV inspections of 160,000 feet of mainlines.
- Adopted a 10-Year Capital Improvement Project Master Plan to guide future improvement projects in the District.